



323 Vintage Park Drive, Foster City, CA 94404 Tel: (650) 573-1968 Fax: (650) 573-1969
Email: info@biocheckinc.com

Catalog BCH-2/5-3 Rabbit Monoclonal Anti-Human Id1

Introduction: There are four members of the Id protein family, Id1, Id1, Id3, and Id4. These proteins were initially discovered as proteins involved in the negative control of cell differentiation. Id proteins act as a negative regulator of transcription through physical interaction with a group of transcription factors known as bHLH (basic helix-loop-helix) proteins. Id proteins interact with bHLH proteins in a manner that prevents DNA binding to the HLH proteins. Because of this activity, the group of proteins were named as Id (*for inhibitor of DNA binding*). Id proteins have also been found to bind with a number of other proteins such as Rb, Ets, Paz, MIDA-1 and SREBP-1c. Id proteins may play a central role in coordinating gene expression, cell proliferation, tumorigenesis, and angiogenesis. Id proteins have been found to be over-expressed in many types, including Glioblastoma, Medulloblastoma, Neuroblastoma, Pancreatic Cancer, Thyroid Cancer, Squamous Cell Carcinoma, Breast Carcinoma, Endometrial Cancer, Cervical Cancer, Melanoma, and Retinoblastoma. There is a growing body of evidence that Id1 and Id3 play a central role in angiogenesis. Experiments in Id1^{-/-}, Id3^{-/-} knockout mice indicated that with the loss of Id expression there was no vascularization and no subsequent growth of tumors. (1,2,3,4,5)

1. Benezra *et al.*, BioChemica et Biophysica Acta 1551: (2001) F39-F47.
2. Benezra *et al.*, Oncogene 20:(2001) 8334-8341.
3. Lasorella *et al.*, Oncogene 20: (2001) 8326-8333.
4. Zebedee *et al.*, Oncogene 20: (2001) 8317-8325.
5. Perk *et al.* Cancer Res. 66: (2006) 10870-10877

Antigen Source: Recombinant full length human Id1 recombinant protein.

Lot Number:

Quantity: 50 µg (BCH-2/5-3-cDNA-50), 100 µg (BCH-2/5-3-cDNA-100), or 1 mg (BCH-2/5-3-cDNA-1000)

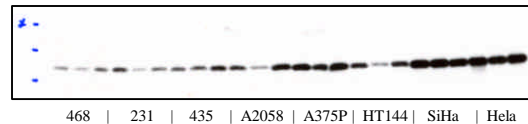
Antibody Concentration (A_{280nm}): 0.05 mg/ml

Product Form: Transiently expressed anti-human Id1 in cell culture supernatant with 0.25% BSA and 0.05% sodium azide.

Specificity: Reacts with human Id1, does not react with mouse Id1. Other species have not been tested.

Storage Condition: At 2-8° C. DO NOT FREEZE. Precipitation may occur upon freezing.

Western Blot: We recommend diluting clone 5-3 to 0.5 µg/ml (1/100) in a suitable diluent and incubating for 4-16 hours at room temp for the primary antibody step in a Western Blot. Optimal dilution for Western Blot should be determined by the individual researcher.



Western Blot with Clone 5-3: Various types of tumor cell lysates run in triplicate on Western Blot and reacted with clone 5-3. Breast Cancer = 468, 231, 435. Melanoma = A2058, A375P, and HT144. Cervical Carcinoma = SiHa, HeLa. Clone 5-3 reacts with a single band at approximately 18kD.

Immunohistochemistry: This antibody is not suitable for immunohistochemistry applications.

Limitations and Warranty: This product is intended for **RESEARCH USE ONLY**. It is not intended for nor approved for diagnostic use or therapeutic applications.